

Happy Times

Drop-Off Tuesdays in March

Nye Pointe will continue to do “Drop-Off Tuesdays” in March but with weather much colder we will no longer be doing it in the garage. It will still be held between the hours of 10:00 am-11:00 a.m. but we ask that you call ahead and we will meet you at the back door. It is on the north side in the corner. We look forward to serving you in this way.

During this time, we needed to be a little more creative as well as follow guidelines. Items such as candy and snack foods need to remain in pre-packaged materials. This is so that we can follow with disinfect protocol. Ideas to drop off would be flowers, bath supplies, pre-packaged snacks, etc.

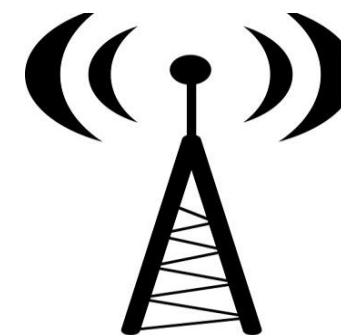
After you drop items off, our staff will wipe/spray them down with disinfectant and deliver them as soon as we can!

If you have any questions or concerns, please feel free to call and ask. We do miss each and every one of you and can only imagine how much you miss visiting your loved ones! Stay safe, stay healthy and know that your loved ones are our number one priority!



March 2021

Sunday	Monday	Tuesday	Wednesday	Thursday	Friday	Saturday
<p><u>Activity Calendar Abbreviations:</u> AR - Activity Room C - Chapel DR - Dining Room LR - Living Room R - Resident's Room</p>	<p>1 11:15 Exercise-LR 2:15 Hallway Bingo 4:00 I Wish you...-R 1-1's</p>	<p>2 11:15 Exercise-LR 2:15 Hangman-C 4:15 Let's Write a Story-LR 1-1's</p>	<p>3 9:30 Hymns on CD-LR 11:15 Noodle Balloon-LR 2:15 God is Good & Bible Trivia-C 4:15 Music-LR/R 1-1's</p>	<p>4 11:15 Exercise-LR 2:15 Crafts-C 4:15 Short Stories-LR 1-1's</p>	<p>5 World Day of Prayer Morning: Manicures-R 2:15 Popcorn/Drink Social-C 4:15 Music-LR/R 1-1's</p>	<p>6 11:15 Exercise-R 2:15 Hallway Pokeno 4:15 Music-LR/R 1-1's</p>
<p>7 9:30 Hymns on CD-LR 10:30 Mass for Shut Ins Ch. #6 or #64-R 11:15 Exercises-LR 2:15 God Will Take Care of You-C</p>	<p>8 10:00/10:45 Resident Council-C 11:15 Exercise-LR 2:00 - 4:00 Music Live thru Zoom (in Groups-C) 1-1's</p>	<p>9 11:15 Exercise-LR 2:15 Hallway Bingo 4:15 Short Stories-LR 1-1's</p>	<p>10 9:30 Hymns on CD-LR 11:15 Noodle Balloon-LR 2:15 God is Good & Bible Trivia-C 4:15 Music-LR/R 1-1's</p>	<p>11 Johnny Appleseed Day 11:15 Exercise-R 2:15 Crafts-C 4:15 Short Stories-LR 1-1's</p>	<p>12 Morning: Manicures-R 2:15 Popcorn/Drink Social-C 4:15 Music-LR/R 1-1's</p>	<p>13 11:15 Exercise-LR 2:15 Hallway Pokeno 4:15 Music-LR/R 1-1's</p>
<p>14 Daylight Savings Begins 9:30 Hymns on CD-LR 10:30 Mass for Shut Ins Ch. #6 or #64-R 11:15 Exercises-LR 2:15 Oh, How He Loves You & Me-C</p>	<p>15 10:00 March Trivia-LR 11:15 Exercise-LR 2:15 Hallway Bingo 4:15 Music-LR/R 1-1's</p>	<p>16 11:15 Exercise-LR 2:00 St. Patrick's Party-DR 4:15 Short Stories-LR 1-1's</p>	<p>17 St. Patrick's Day 9:30 Hymns on CD-LR 11:15 Noodle Balloon-LR 2:15 God is Good & Bible Trivia-C 4:15 Music-LR/R 1-1's</p>	<p>18 11:15 Exercise-LR 2:15 Crafts-C 4:15 Short Stories-LR 1-1's</p>	<p>19 Nat'l Red Nose Day Morning: Manicures-R 2:15 Popcorn/Drink Social-C 4:15 Music-LR/R 1-1's</p>	<p>20 11:15 Exercise-LR 2:15 Hallway Pokeno 4:15 Music-LR/R 1-1's</p>
<p>21 World Poetry Day 9:30 Hymns on CD-LR 10:30 Mass for Shut Ins Ch. #6 or #64-R 11:15 Exercises-LR 2:15 Faith-Based Poetry-C</p>	<p>22 10:00 Rhyming Time-LR 11:15 Exercise-LR 2:15 Hallway Bingo 4:15 Music-LR/R 1-1's</p>	<p>23 11:15 Drumming Exercise-C 2:15 - 4:00 Spa Day-C 4:15 Short Stories-LR 1-1's</p>	<p>24 9:30 Hymns on CD-LR 11:15 Noodle Balloon-LR 2:15 God is Good & Bible Trivia-C 4:15 Music-LR/R 1-1's</p>	<p>25 11:15 Exercise-LR 2:15 Crafts-C 4:15 Short Stories-LR 1-1's</p>	<p>26 Nat'l Wear a Hat Day Morning: Manicures-R 2:15 Popcorn/Drink Social-C 4:15 Music-LR/R 1-1's</p>	<p>27 11:15 Exercise-LR 2:15 Hallway Pokeno 4:15 Music-LR/R 1-1's</p>
<p>28 Palm Sunday 9:30 Hymns on CD-LR 10:30 Mass for Shut Ins Ch. #6 or #64-R 11:15 Exercises-LR 2:15 Jesus's Journey to the Cross-C</p>	<p>29 10:00 Easter Trivia-LR 11:15 Exercise-LR 2:15 Hallway Bingo 4:15 Music-LR/R 1-1's</p>	<p>30 11:15 Exercise-LR 2:15 Fun w/Words-C 4:15 Short Stories-LR 1-1's</p>	<p>31 9:30 Hymns on CD-LR 11:15 Noodle Balloon-LR 2:15 God is Good & Bible Trivia-C 4:15 Music-LR/R 1-1's</p>			<p><u>The Activity Calendar is subject to change</u> * Weather Permitting Face Time Available Daily Upon Request</p>



POPULAR STATIONS

- Radio 1110 AM (KFAB)
Omaha News
- Radio 1340 AM (KHUB)
Fremont News
- TV Ch. 3 GSN
Game Show Network
- TV Ch. 6 WOWT NBC
- TV Ch. 7 KETV ABC
- TV Ch. 24 Big 10
Network Sports
- TV Ch. 25 Weather Channel
- TV Ch. 51 TCM
Turner Classic Movies
- TV Ch. 56 TVLand
Classic Television



SUNDAY RELIGIOUS BROADCASTS

- Christian Worship Hour
6:00 am TV Ch. 5
- Lutheran Hour
6:30 am 1110 AM (KFAB)
- Message of the Cross
7:00 am TV Ch. 10
- Mass for Shut Ins
10:30 am TV Ch. 6
- Mass for the Day
11:00 am TV Ch. 64



Hello, March!

Let the Luck of the Irish be with you!

We have a new toy we received in January, it's called Eversound. We received 10 headsets and a transmitter. This device gives the hearing impaired a way to hear clear and without background noise. We will use it with Activites, movies, Facetime and Skype. We also will use it to do music MWF at 4:15 pm with the residents. They really enjoy this time.

We are also trying new activities this month; drumming exercise class, noodle balloon and crafts weekly. We will continue to keep your loved ones happy and engaged. If you have any questions please don't hesitate to call Judy or Jo.

JoAnn & Judy



Nye Pointe
a Nye Health Services campus

2700 North Laverna Street
Fremont, Nebraska 68025
402.727.4900
nyepointe.com

March 2021



March Birthdays

March 9th - Barbara T.

Our Leadership Team

Kirk Sweeney	Executive Director
Nicole Ortmeier	Senior Director
Crista Fischer	Director of Nursing
Nicole Watson	MDS Coordinator
Elizabeth Anderson	Administrative Services Coordinator
JoAnn Fuhlrodt	Director of Life Enrichment
Linda Kelberlau	Director of Culinary Services
John Belak	Director of Environmental Service
Jim Kuddes	Director of Maintenance Services